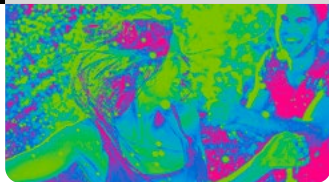




**EN - USE AND MAINTENANCE  
MANUAL**  
high performance flexible hose



**USA.FITT.COM**

---

# EN

---

**USE AND  
MAINTENANCE MANUAL**

---

**04**

---

---

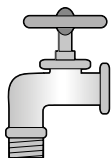
**MORE  
INFORMATIONS**

---

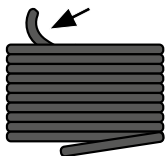
**05**

---

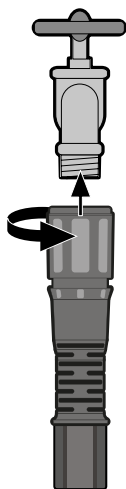
**STEP 1**



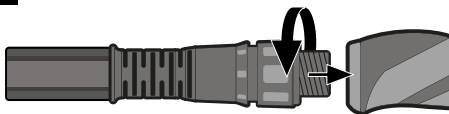
**STEP 2**



**STEP 3**



**STEP 4**



---

**Important safety and installation instructions. Please read and follow all warnings and instructions before using this product. Injury can result from improper use.**

Thank you for your purchase of the product!  
Installing your new hose is as easy as 1-2-3

---

## **INSTALLATION INSTRUCTIONS FOR USE:**

---

**Step 1:** Locate the water supply outlet you would like to connect your hose to.

**Step 2:** Remove the product from the package and completely uncoil it starting with the male end.

**If necessary, manually eliminate any twists.**

**Step 3:** Attach the female end of the product to the water supply outlet by screwing the connector clockwise until firmly seated.

**Step 4:** If using a nozzle with the product, attach it to the male end of the hose at this time.

**Step 5:** Enjoy your new hose!

---

## **SAFETY WARNINGS**

---

- Our product is intended for outdoor watering applications only
- Not for hot water use
- Do not leave under pressure when not in use
- Do not leave unattended children to use the product
- Do not leave out on freezing temperatures
- Store indoors in winter
- For proper use, allow water to flush through the hose a few minutes before drinking
- Coupling protection: to avoid any kind of corrosion causing fusion between the faucet and the coupling on the hose, we suggest disconnecting and reconnecting the hose from any metal spigot a minimum of 3 times per year.

---

## **REMOVABLE COUPLINGS**

---



As part of the FITT commitment to sustainability, the Aquamaster hose is supplied with removeable, reusable couplings. If the hose is damaged, the coupling is simply removed using a 1/2" hex-key and a pair of adjustable pliers and is easily reattached once the damaged hose is removed, extending the life of the hose. Please download the instruction manual for more details on repairing your Aquamaster hose.

- 
- Optimum working pressure from 29 up to 100 psi
  - Bursting pressure 350 psi
-

 and **fitt** are registered trademarks of FITT S.p.A.

**NTS**<sup>®</sup> and  are registered trademarks of FITT S.p.A.

---

The medium metallic graphite gray color of the hose coupling is a Registered U.S. Trademark of FITT S.p.A.

The gray stripe is a trademark of Fitt S.p.A.

---

usa.fitt.com

### **FITT GARDENING SOLUTIONS**

This is the business area of the FITT group that develops solutions and products for gardening, irrigation, cleaning and outdoor life applications for hobby and professional use, such as hoses for camping, watering ornamental gardens, terraces and vegetable gardens, washing cars, bicycles and pets.

For more information:

#### **FITT USA Inc.**

Mooresville, North Carolina USA  
customercare.usa@fitt.com  
usa.fitt.com

