



USE AND MAINTENANCE MANUAL

FITT Spreel
automatic hose reel



USA.FITT.COM

EN

Important safety and installation instructions. Please read and follow all warnings and instructions before using this product. Injury can result from improper use.

Thank you for your purchase of the product!

Installing your new hose reel is as easy as 1-2-3

USE AND MAINTENANCE MANUAL

**FOR USE
ON WALL MOUNT**

p. 03

**HOW TO INSTALL
ON TO TIMBER**

p. 08

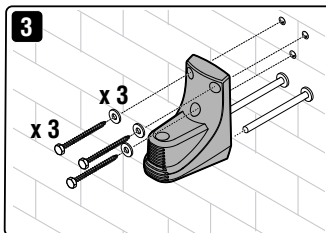
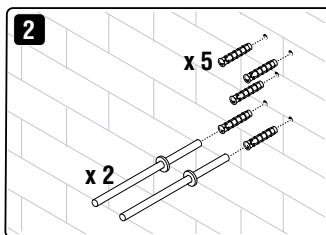
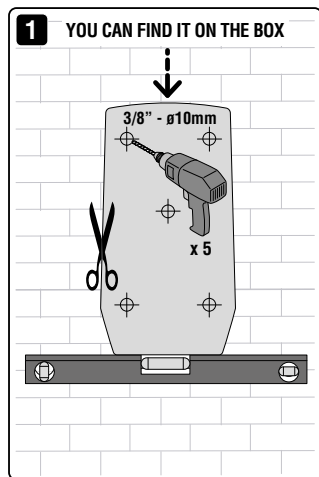
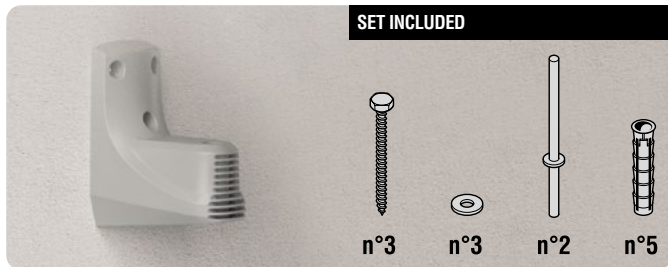
CONTENT OF THE BOX

- 1) Plugs, pins, screws and washers for fixing the reel to the wall
- 2) Auto hose reel with 100ft hose equipped with:
 - male coupling
 - Stopper/damper
- 3) Wall support
- 4) Extension hose equipped with:
 - female coupling

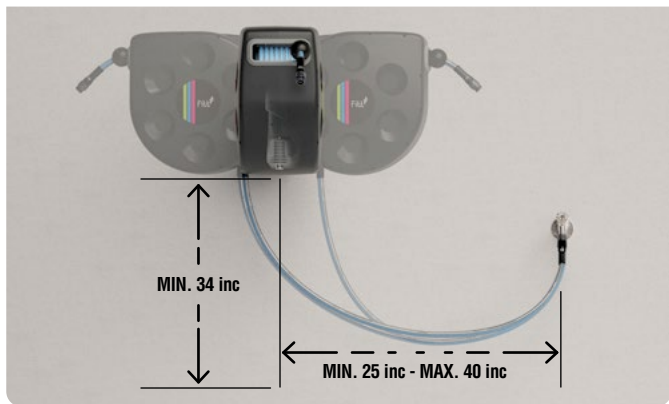
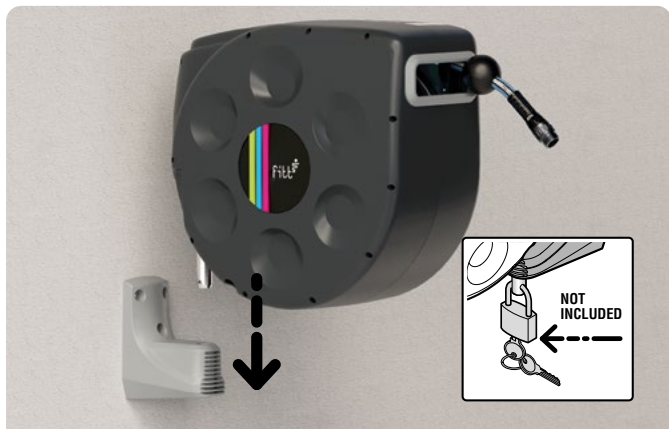
FOR USE ONLY ON WALL MOUNT

INSTALLATION INSTRUCTIONS ON CONCRETE

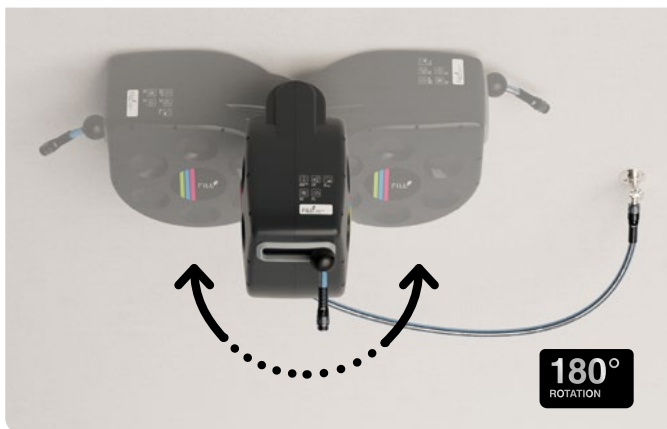
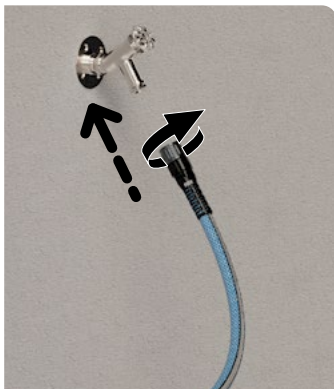
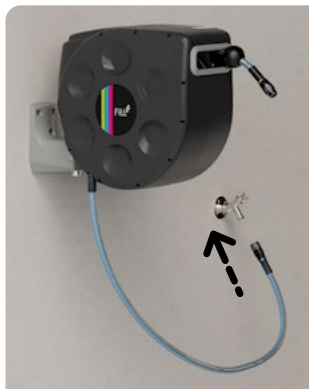
STEP 01



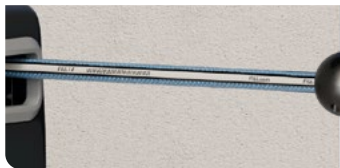
STEP 02



STEP 03



STEP 04



GENERAL WARNINGS

IMPORTANT - Before installing and using the product, please read these instructions carefully and store them for future consultation.



WARNINGS - This product is an automatic hose reel designed and manufactured to be used in exclusively residential contexts. It must not be used in other commercial, industrial or public contexts. FITT does not assume responsibility for any other use or incorrect use of the product. The hose inside the product automatically rewinds back up after use, by pulling it once. We recommend to hold/ guide the hose while it is retracting. The product should be mounted on the wall following the instructions provided in this manual, using the support provided in the package. FITT Spreel can be angled up to 180°.

SAFETY WARNING

Follow these instructions to avoid damaging the product or creating hazards for human safety. Any repair work or fitting of spare parts must be performed by an authorised support centre only. Supervise children, or people with physical or cognitive disabilities during use, or do not allow them to use the product.

HOW TO USE THE PRODUCT



WARNING - When unreeling and rewinding the hose, do not put your fingers in the hose feed slot. Make sure that the hose is not obstructed by obstacles, dirt or similar as it rewinds.

How to unwind the hose - Pull out the hose to the desired length and release it. The hose automatically locks in place. If the hose doesn't lock in place, repeat the operation more slowly.

How to rewind the hose - Pull out the hose a few inches until you hear a click, then release it gently to activate the rewind mechanism. The hose rewinds evenly. If the hose won't rewind or won't rewind completely when it is fully extended, turn off the water at the tap and turn on the spray nozzle so as to drain the water. Try the rewind operation again. **WARNING** - We recommend to hold/ guide the hose while it is retracting.

After use - Turn off the tap and open the adjustable nozzle to release the water pressure.

MAINTENANCE



WARNING - Never open FITT Spreel. Risk of injury. Any repairs must be performed by an authorised support centre only.

EMPTYING

Before putting FITT Spreel away, make sure that all of the water in the hose has been completely drained away. To do this, pull the hose out fully, keeping the nozzle open.

REMOVAL/STORAGE



WARNING- Before removing FITT Spreel from the wall support, make sure that you are able to sustain the weight (32 lbs).

Remove FITT Spreel by unthreading the pin from the wall support.
During winter, store FITT Spreel in a place where it is protected from frost/freezing.



HOW TO INSTALL FITT SPREEL ON TO TIMBER

- First choose the wall or surface you want to mount your FITT Spreel on to.
- Then using a stud finder find the framing stud, you will need to drill through the stud when attaching the bracket.
- Now measure how high you would like the reel to set, we recommend mounting it 34inch measuring from the ground to the bottom of the wall bracket.
- You'll need to align up the bracket, so two of the drill holes, one on top and one bottom, go into the stud for extra stability.
- Hold the template in place and ensure it levelled, then mark the holes with a pen.
- Use 3/16 inch wood drill bit to make the holes.

 and **fitt** are registered
trademarks of FITT S.p.A.

The medium metallic graphite gray color of the
hose coupling is a Registered U.S. Trademark
of FITT S.p.A.

The gray stripe is a trademark of Fitt S.p.A.

usa.fitt.com

FITT GARDENING SOLUTIONS

This is the business area of the FITT group that develops solutions and products for gardening, irrigation, cleaning and outdoor life applications for hobby and professional use, such as hoses for camping, watering ornamental gardens, terraces and vegetable gardens, washing cars, bicycles and pets.

Certified



This company meets high standards of social and environmental impact.

Corporation

For more information:

FITT USA Inc.

Mooresville, North Carolina USA
customer care.usa@fitt.com
usa.fitt.com

